

993902-01.c

Figure 1: ZP3-ECUS Extinguishing Status Unit



Brief Description

The Ziton ZP3-ECUS Extinguishing Status Unit (see Figure 1) connects to a ZP3-ECU Extinguishing Control Unit.

The Extinguishing Status Unit has key switches to enable remote control of the Extinguishing Control Unit for automatic or manual selection, as well as lock-off for maintenance. Other controls are manual extinguishant release via the callpoint, alarm silence push button, as well as an extinguishant hold off more time button. Indicators mimic those on the Extinguishing Control Unit for automatic, manual, locked-off, extinguishant discharged and reset status.

Manual extinguishant release facilities are monitored from one Status Unit to another with an end of line resistor connected at the unit furthest from the Extinguishing Control Unit. This resistor can be connected by means of a link.

Up to ten Extinguishing Status Units and/or Repeater Units may be attached to any one Extinguishing Control Unit.

Specifications

General Information

Designation	ZP3 Extinguishing Status Unit
Model number	ZP3-ECUS
Part number	0801
Compatibility	ZP3-ECU Extinguishing Control Unit
Max. no. per ECU	10 (Status and/or Repeater Units)

Environmental rating
EN60529

IP40

Primary Supply

Operating voltage	22 to 29 VDC
Current (quiescent)	28 mA
Maximum (extinguishant release)	60 mA

Mechanical Details

Colour	Ash grey
Dimensions (W x H x D)	300 x 230 x 100 mm
Mounting method	Surface mounting

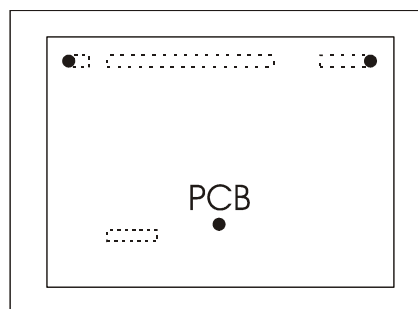
Installing the Extinguishing Control Status Unit (ECUS)

The ECUS can be either surface mounted or recessed semi-flush into a wall as shown in Figure 2.

Note: Rear conduit entry is provided; top entry is allowed, while bottom entry is not allowed.

Install the ECUS as follows:

1. Unlock and open the front panel with the key provided.
2. Disconnect the front panel by unplugging the ribbon cable connector on the main PCB.
3. Remove the front panel by sliding it out of the two slots on the unit.
4. Loosen the three (3) bolts indicated below.



991253-01.cdr

5. Remove the PCB-chassis plate assembly.
6. Mount the ECUS housing onto the three M5 securing bolts see (Figure 3) in the surface mount or semi-flushed recess positions (see Figure 2).
7. Securely tighten the three M5 securing bolts from the front of the ECU to secure the ECUS housing.

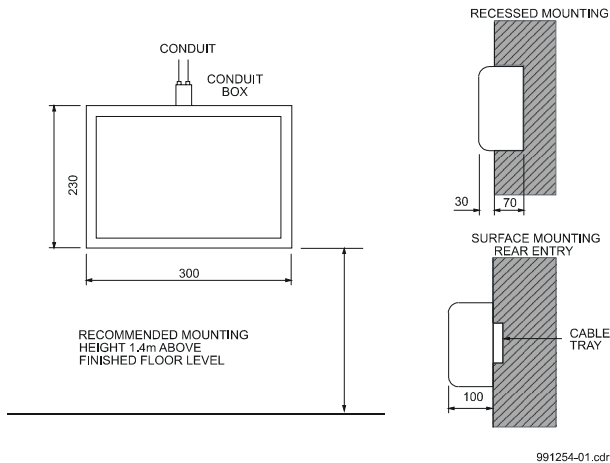


Figure 2: ZP3-ECUS Mounting Arrangements

8. Re-fit the PCB-chassis plate assembly.
9. Refit the front panel.
10. Reconnect the ribbon cable connector that was disconnected in step 2 of this procedure.

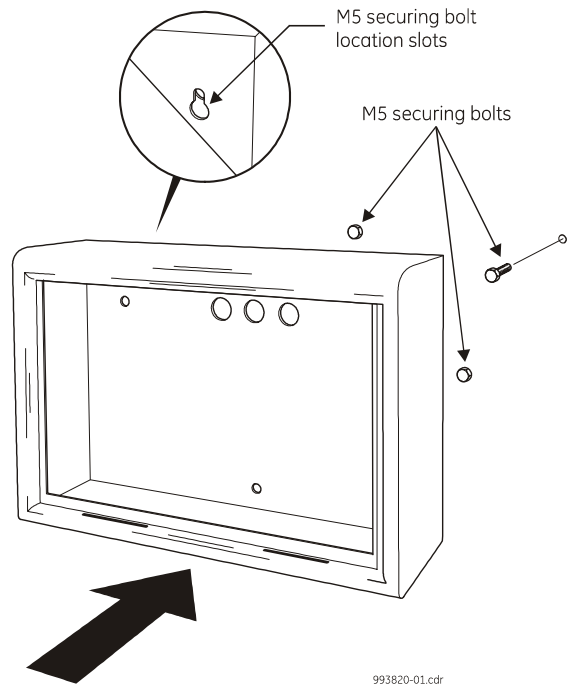
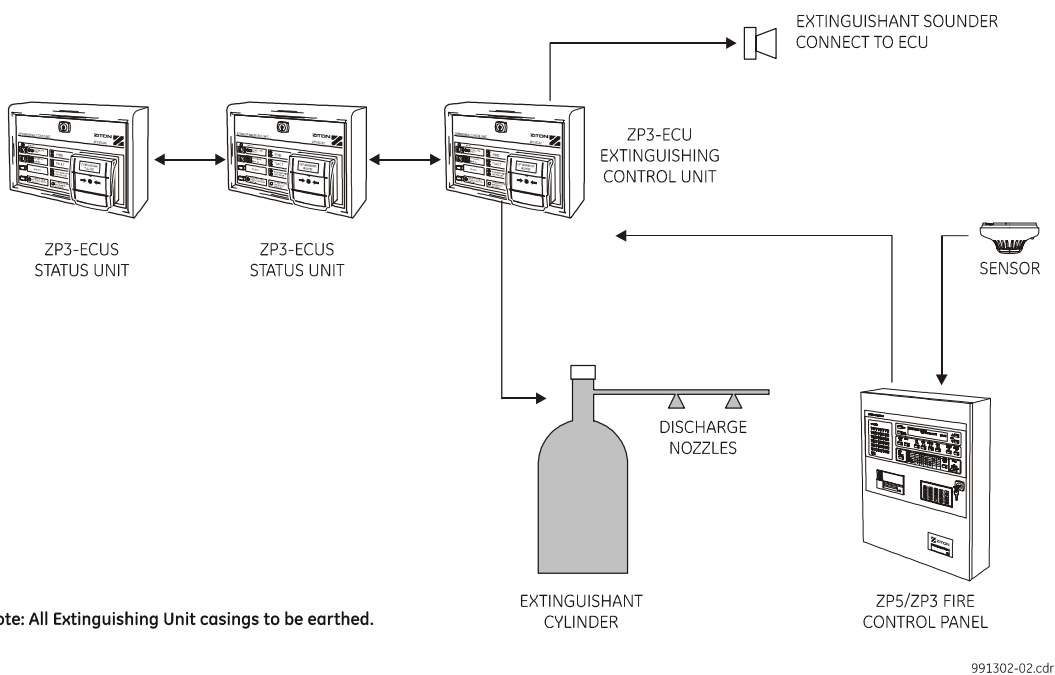


Figure 3: ECUS M5 Securing Bolts

Note: The Extinguishing Control Units and Extinguishing Repeater Units are installed in the same way as the Extinguishing Status Unit.

Refer to Figure 4 for a typical wiring schematic of the Extinguishing Status Unit.

Wiring Schematic



Note: All Extinguishing Unit casings to be earthed.

Figure 4: ZP3-ECUS Wiring Schematic

Connecting 24 VDC and Terminal Wiring

Note: See also ZP3-ESM Extinguishing Status Main Board Installation Sheet, doc. no. 501-00805ZE-1-01 for terminal functions.

Connect the 24 VDC power and terminal wiring to/from the ECUS Main Board as shown in Figure 5.

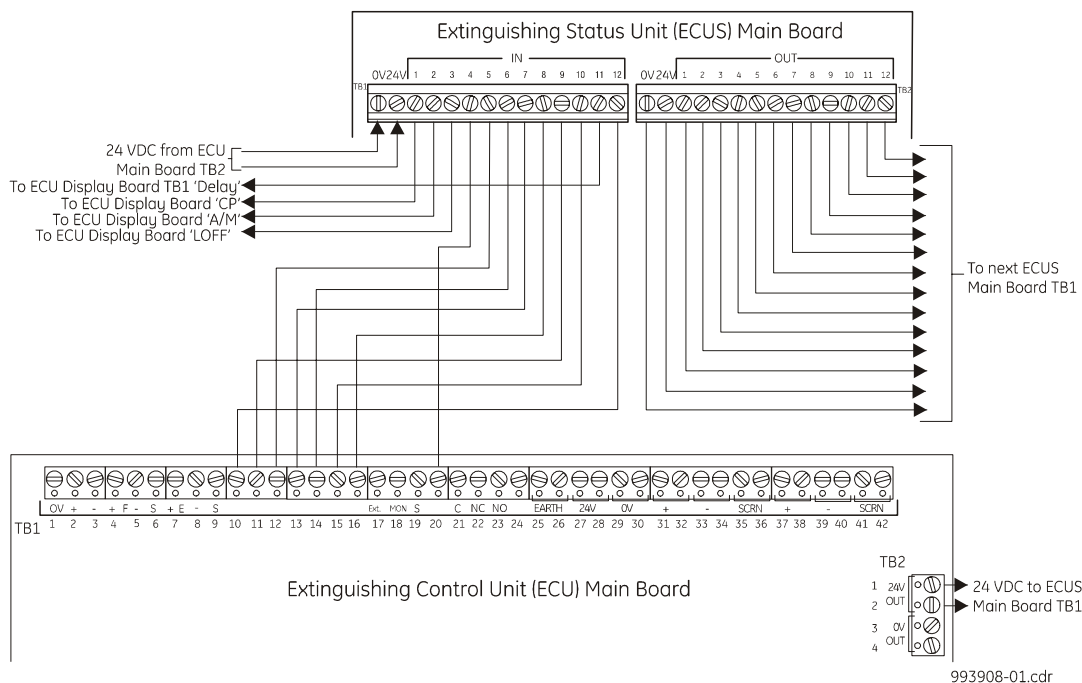


Figure 5: Extinguishing Status Unit Terminal Connections

Earth Connection

The Extinguishing Status Unit must be connected to a secure earth as shown in Figure 6.

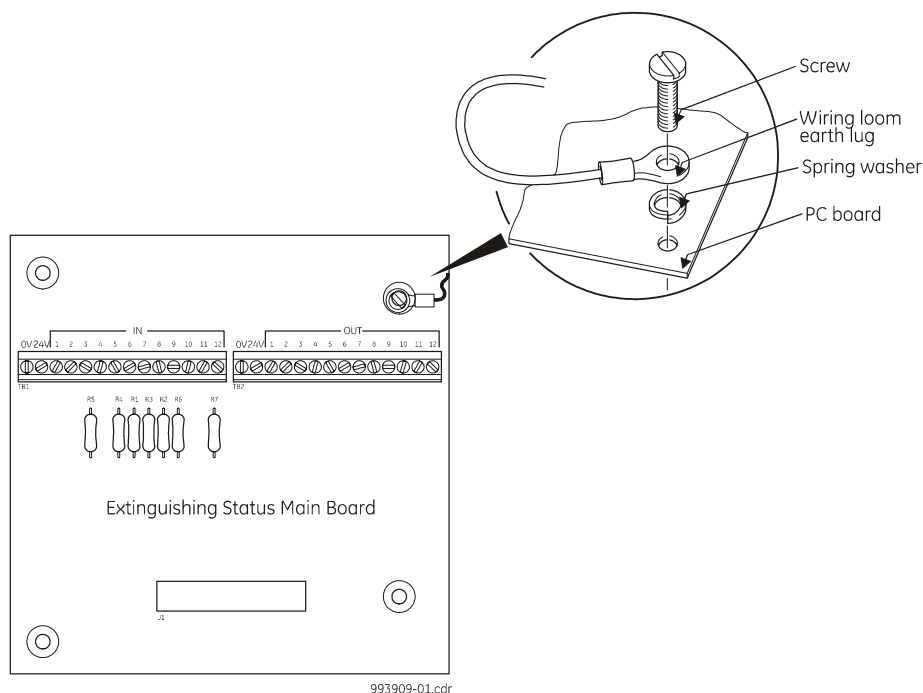


Figure 6: Extinguishing Status Unit Earth Connection

