

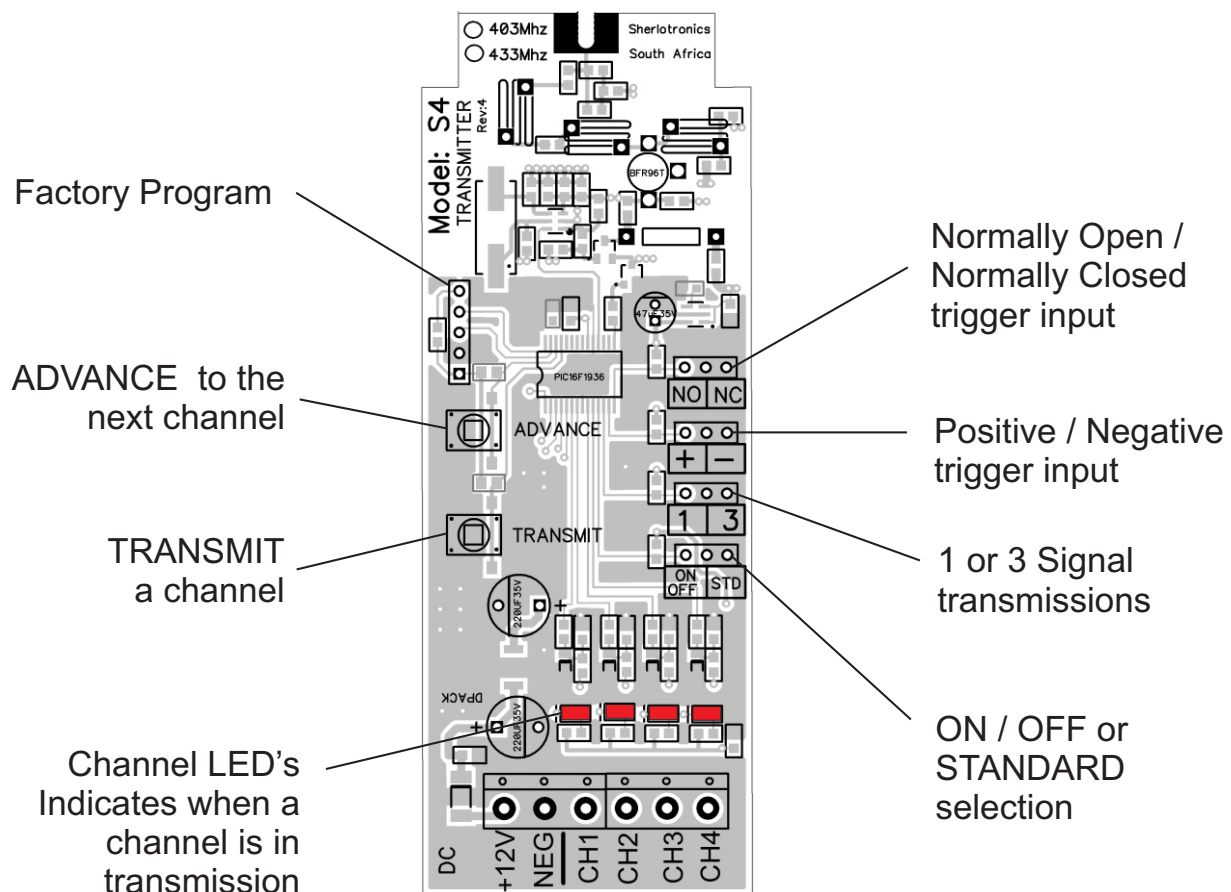
4 Channel Stand-alone transmitter

Specifications:

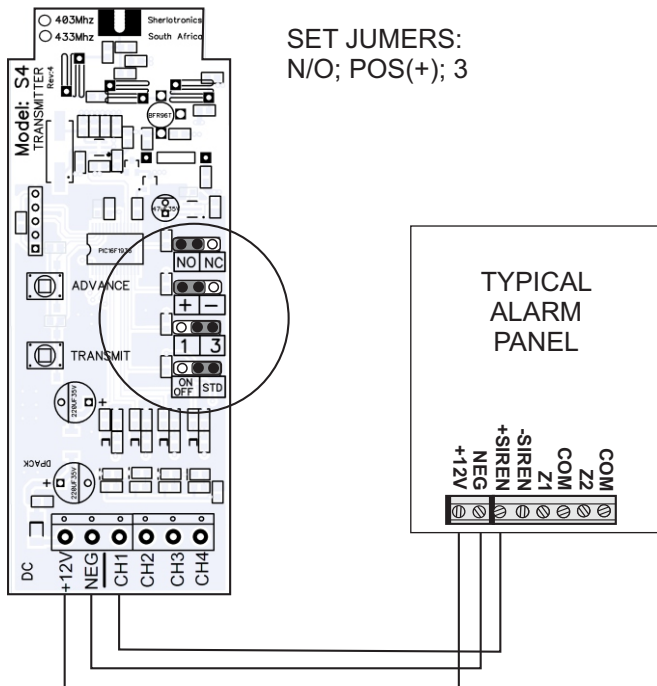
Encryption type	Code-Hopping
Frequency	403.55Mhz
Range : Line of site	1500m
Range : Indoors	300m
Current drain with all outputs triggered	110mA
Power supply voltage	12V DC
Dimensions: ABS Housing	100 x 60 x 25mm

Features:

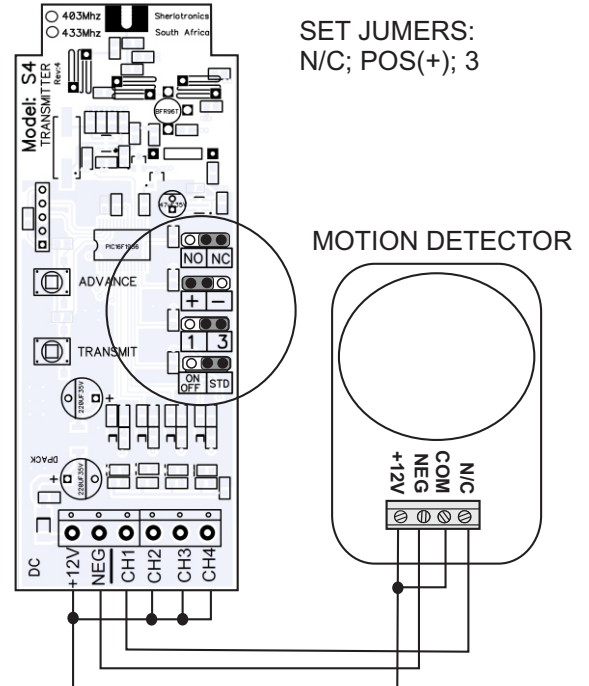
- 1 - 4 Channel outputs.
- Normally open / closed trigger inputs.
- Positive / Negative trigger inputs.
- 1 or 3 Signal transmissions.
- ON / OFF logic ie:- (Pump software selectable)
- Channel **Advance** and **Transmit** buttons for convenient programming



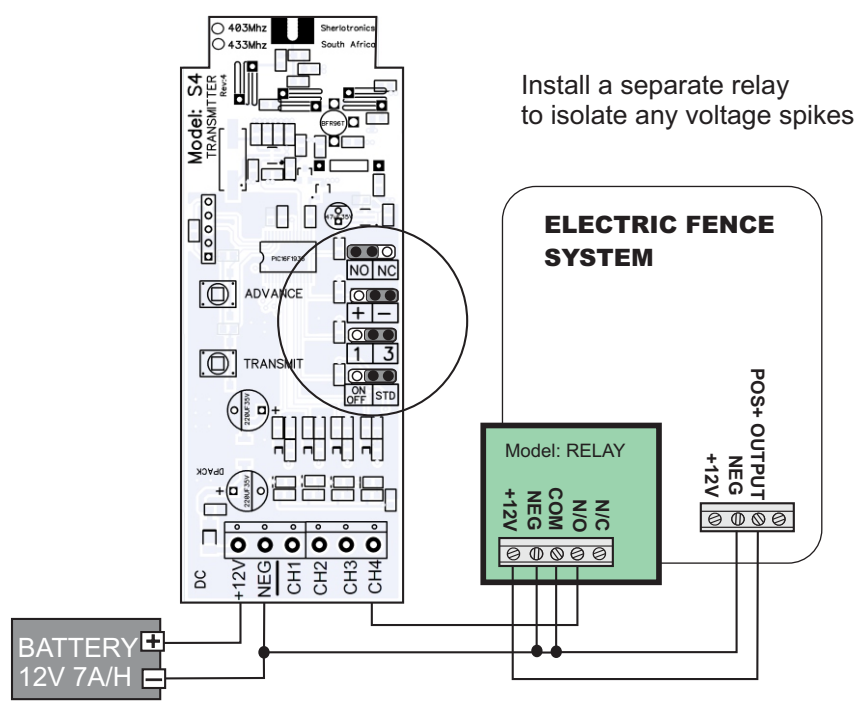
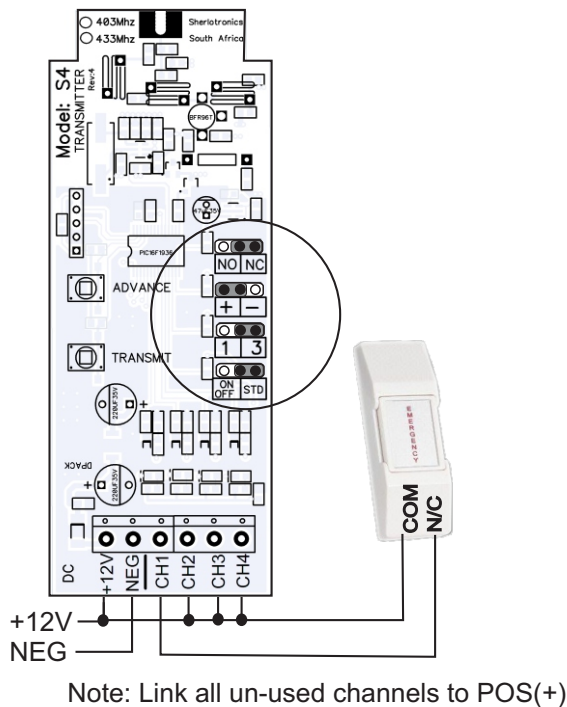
4 Channel Stand-alone transmitter



Note: If Alarm panel is programmed to squawk when armed/dissarmed, do not use the Siren output.

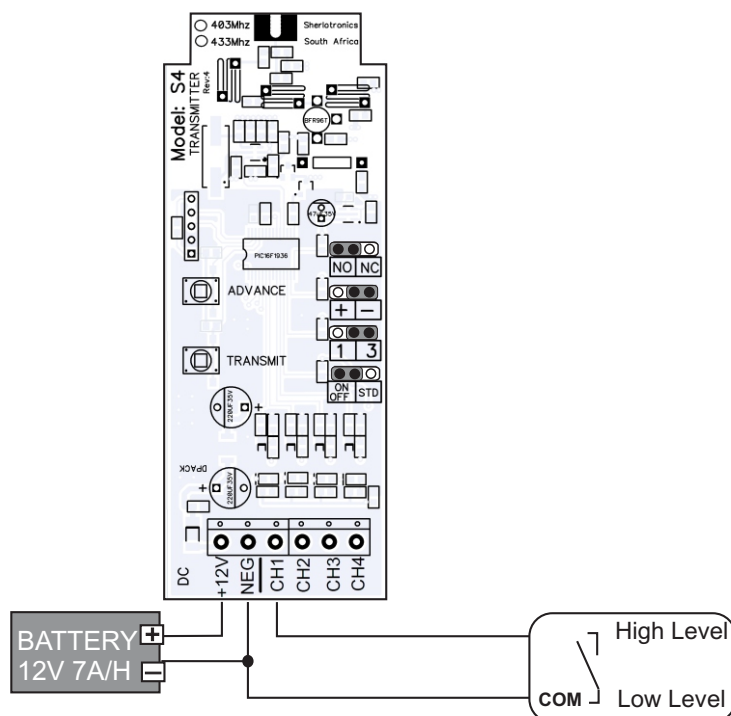


Note: Link all un-used channels to POS(+)



Note: Channel 4 has a 2 second de-bounce delay. This prevents spikes generated from the electric fence system from false triggering the unit. All other channels have a 0,5 second de-bounce delay. Install a separate relay board to isolate any spikes.

4 Channel Stand-alone transmitter



ON/OFF FUNCTIONALITY EXPLAINED

Once the ON/OFF jumper is connected, the Transmitter will transmit a separate signal encoded to switch a receivers Relay contact ON or OFF depending of the transmitters trigger input condition.

The function will only work on ON / OFF (PUMP Receiver enabled units).

- 1 Channel RX, Model: RX1_500
- 4 Channel RX, Model: RX4_500_v3

This functionality ensures the unit does not get out of sequence as with normal latching/unlatching functions.

If you are using a different 12V power-source to that of the Transmitters then it is recommended to common up on the Ground / Negative so that all the devices have a common negative reference.

PROGRAMMING A RECEIVER

1. Press the ADVANCE button on the S4 to select which Channel you will be learning to the receiver unit. The LEDS will stop running.
2. Place the Receiver unit into LEARN mode, following the relevant receiver models programming procedure.
3. Press the TRANSMIT button to enable the unit to start transmitting a sequence of signals. This will take approx 3 seconds to complete. You can repress the Transmit button at any time to re-transmit.
4. The Receiver's BUZZER should beep whilst learning in.
5. Take the Receiver out of LEARN mode and test that the Transmitter activates the receiver.

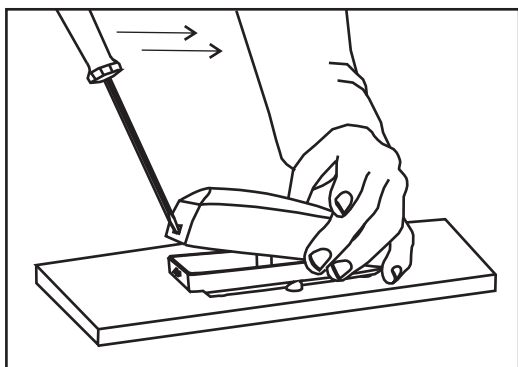
Note: Please place the Aerial onto the Transmitter before programming a receiver. Keep the Receiver and Transmitter at-least 2m apart from each other whilst learning the unit and remove the aerial from the receiver unit if you are experiencing difficulty in getting the receiver to program in, as in some cases the transmitter can over power the receiver if it is very close to the receiver.

4 Channel Stand-alone transmitter

MOUNTING & OPENING THE UNIT

The plastic housing is splash proof, and may be mounted externally if required. The unit should be mounted Vertically for best performance. Ensure that you do not mount the unit close to electric fence cables or energizers, as these products produce extreme levels of interference and may reduce the performance of the product. If mounting indoors try and centralise the unit, and keep it at least **3 meters** away from Armed Response company's alarm radio transmitters.

We recommend you to mount the unit more than 2 metres above the floor height either inside a cupboard or just above the trap door. For large properties that require reception range, mount the unit externally. Always conduct a signal range test before you hand over the product to the client, ensuring that the systems works reliably. You may need to move the unit if you encounter dead spots. In rare cases you may need to install a booster repeater unit for coverage around large multi levelled sites.



Insert a small 1-1.5mm flat screw driver into the slot at the back of the housing and lever the lid open.