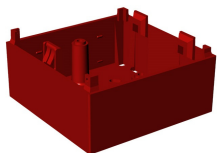


EV-MCP2-IP24 Installation instructions

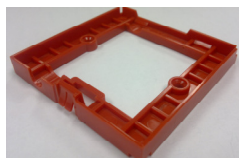
1. For Surface Mounting, carefully cut/drill holes for cables/glands, in the Back Box, if required for the installation. Fix the Back Box to wall using screws provided, through the pre-drilled holes.

For Flush Mounting, Fix the Wall Plate to wall using screws provided.

NOTE: For Flush Mounting use 35mm Metal Knockout box or Dry lining box.



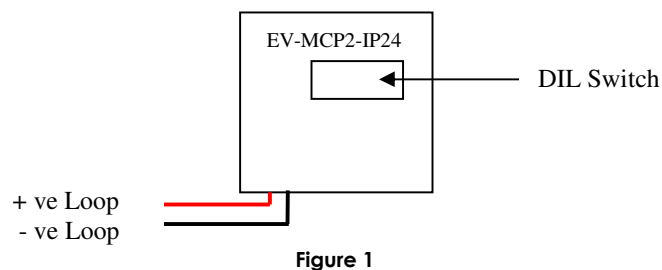
Surface Mount Back Box



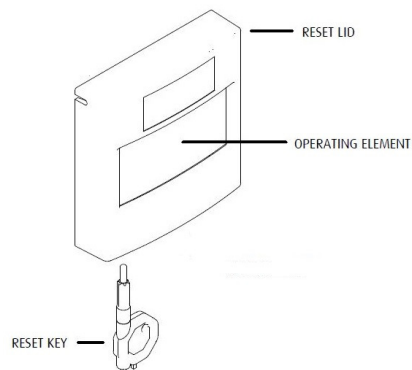
Flush Mount Wall Plate

3. Set the device address using the 8-Way DIL switch on the reverse of the Unit.

4. Make the Loop connections as shown in figure 1 below, using the mating connectors provided. **NOTE:** Loop end plugs can be connected together for initial cable testing.



5. Clip the Reset Lid to the Back Box, ensuring the clip is full engaged.



EV-MCP2-IP24 Installation instructions

6. To Activate the Call Point, Press the Operating Face, where indicated by the arrows, until it Clicks and the Yellow/Black flag is clearly visible.

7. To Reset the Call Point, Insert the Reset Key where shown in Figure 2 and turn anti-clockwise until it Clicks and the Yellow/Black flag has retracted from view.

EV-MCP2-IP24 - Resettable Manual Call Point



2531

NITTAN

Nittan Europe Ltd. Tel: +44 (0) 1483 769 555
Hiple Street, Fax: +44 (0) 1483 756 686
Old Woking, Email: sales@nittan.co.uk
Surrey, GU22 9LQ Web: www.nittan.co.uk
United Kingdom

D.o.P. Number: 01690

EN54-11: 2011 - Type A Indoor Manual Call Point IP24

For use with Nittan Evolution Protocol Only.
Loop Voltage: 20 to 35 V d.c.
Quiescent Current: 200µA
Alarm Current: 2mA (LED ON).
Ingress Protection: IP24
Mass: 115g

Technical Data Sheet: TD-EV-MCP2-IP24