

LON2000

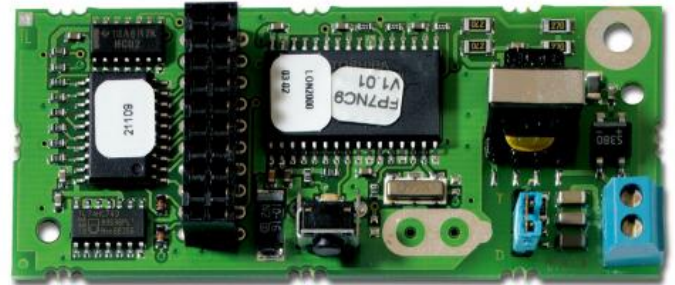
LON700 Interface Driver for FP1200/2000 Series Fire Panels

General

The LON2000 is a LON700 driver that allows the connection of FP1200/2000 fire panels to LON700 series devices.

Application

The LON700 interface is a proprietary bus used for interfacing the GE Security 700 Series devices. The protocol uses a subset of the registered LonWorks protocol.



Standard Features

- Allows a LON700 interface on the FP1200/2000
- No configuration required
- Supplied with nuts and washers for easy installation

LON2000

LON700 Interface Driver for FP1200/2000 Series Fire Panels

Ordering Information

Part No.	Description
LON2000	LON700 Interface Driver for FP1200/2000 Series Fire Panels