



ZP3AB-RS232

Serial communications optional facility card

Connects panel to external devices

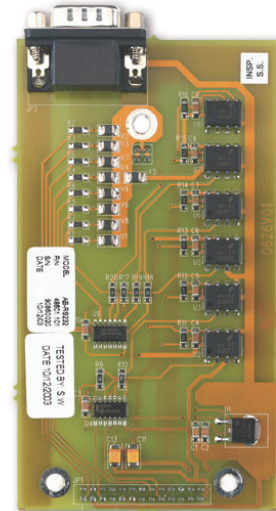
The ZP3AB-RS232 is a serial communications interface which can be attached directly onto the ZP3 main control board, inside the panel enclosure. The board is used to connect the fire alarm panel to external devices for example a desk top printer, or to associated equipment such as graphics displays, pocket paging and building management systems. Serial communication between the fire alarm panel and external device operates by RS 232 protocol, over a 5 wire screened connection. The ZP3AB-RS232 board is defined in the ZP3 fire alarm panel menu as Port 1 and a range of software protocols can be selected to match the requirements of the external communicating system or device.

Operates up to 50 metres

RS 232 communication is usually specified for local connection, with cable lengths no greater than 10 metres. The ZP3AB-RS232 can be operated over distances of up to 50 metres provided slower bit rates are selected from the system setup menu, during commissioning. Communication leads should be provided with standard 9 pin D type connector at the fire alarm panel and a suitable plug, either 9 pin D, or 25 pin D at the connected device. Interface board parameters for example protocol type, baud rate and parity, are simple to configure via the communications menu, within the system software setup programme.

Cost effective options

The ZP3AB-RS232 serial communications board is part of the range of optional facility boards which can be added cost effectively to any ZP3 control panel, in order to provide extra facilities that may not be a requirement of every system. Housed within the ZP3 panel, options can simply be added during panel manufacture to meet particular specifications, or subsequently fitted on site should a particular requirement become necessary during the life of the system.



Standard Features

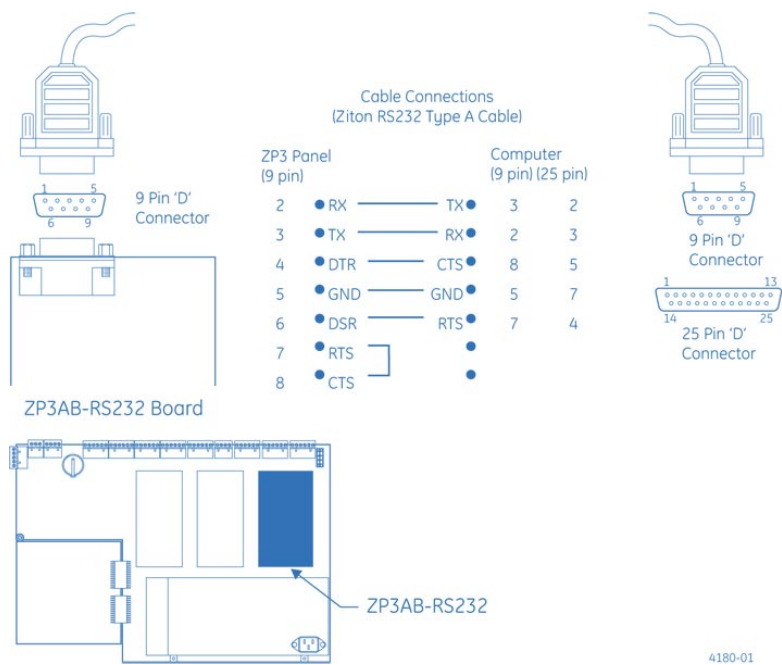
- Optional communications interface for connection to external devices
- Housed inside standard panel enclosure
- Selectable software protocols to match external equipment
- Direct connection up to 50 metres

ZP3AB-RS232

Serial communications optional facility card

Specifications

Model No	ZP3AB-RS232
Description	Serial communications board
Compatibility	ZP3 control panels
Mounting	Plug and socket - fixes to allotted space on panel main board. (with 3 M4 x 18mm stand off spacers)
Comms protocol	RS 232
	Selectable parameters -
	0 - port disable
	1 - ZCP2 multi telegram, full handshake
	2 - ZCP2 single telegram, single direction TX, no handshake
	7- ZCP2 single telegram, full handshake
Baud rates	57600, 38000, 33600, 28800,19200,14400, 9600, 4800, 2400, 1200, 600, 300
Wiring	5 cores screened. Cable length up to 50m subject to baud rate
Connection	9 pin D connector at fire alarm panel, 9 pin D or 25 pin D connector to suit external device (not supplied)
Current	65 mA (total effective load from 24V supply)
Temperature range	-10°C to +60°C
Humidity range	10% to 90% RH (non condensing)
Material	Moulded ABS
Dimensions	PCB 120mm (H) x 55mm (W)
Weight	53g
Publication No	PS1299



Ordering Information

Part No.	Description
ZP3AB-RS232	Serial communications optional facility card

As a company of innovation, GE Security reserves the right to change product specifications without notice. For the latest product specifications, visit GE Security online or contact your GE Security sales representative.
IPS-ZP3AB-RS232-2007-07-31 11:34:22 Released : 17.07.2007

UK Sales: 8 Newmarket Court, Chippenham Drive, Kingston, Milton Keynes, MK10 0AQ, United Kingdom, Telephone +44 (0) 1908 281981, Fax +44 (0) 1908 282554
South Africa: Ziton House, 555 Voortrekker Road, Maitland, 7405, P.O. Box 181, Maitland, 7404, South Africa, Telephone +27 (0)21 506 6000, Fax +27 (0)21 506 6050