



G2online
www.g2online.co.za
tel. 087 940 9322
email sales@g2online.co.za
Unit 30 APD Industrial Park
Elsecar Street
Kya Sand
Gauteng
South Africa 2169



ZP2 Product Catalogue



G2online
www.g2online.co.za
tel. 087 940 9322
email sales@g2online.co.za
Unit 30 APD Industrial Park
Elsecar Street
Kya Sand
Gauteng
South Africa 2169

ZP2-FR-S-99 ZP2 Repeater Panel, Small Enclosure



ZP2-FR-S-99 ZP2 Repeater Panel, Small Enclosure

The fire panel repeaters supplied in local language come with a 2010-2-NB network board already fitted. Except for having no addressable loops and corresponding programmable outputs, the setup is similar as a normal fire panel. It has its own power supply, 2 conventional relay outputs and 2 supervised outputs, working in pair and dedicated to common fire and fault conditions, as well as 2 user configurable inputs for monitoring and control are available.

ZP2-FR-S-99

ZP2 Compact Repeater Panel



ZP2-FR-C-99 ZP2 Addressable Repeater Panel - Compact

The compact repeater supplied in local language come with a network facility already assembled (no network board required). Except for having no addressable loops and corresponding programmable outputs, the setup is similar as a normal fire panel. It has by default 2 conventional relay output, 2 supervised inputs, 1 RS232, 2 USB and 1 Ethernet port. The repeater has no mains voltage power supply unit, but it allows for redundant 24VDC supply connections. For future use and expansions there is also already a repeater bus incorporated. The compact repeater is very easy to mount via the DIN-rail mounting option.

ZP2-FR-C-99



ZP2 Panels

ZP2-LB Ziton ZP2 2 Loop Expansion PCB



The loop board with pluggable connectors adds 2 additional loops to your 2-loop low-end addressable fire panel that doubles the amount of devices to be supported by one panel and 128 extra zones can be programmed. Together with the 2 additional loops, 4 supervised sounder/fire-routing outputs, which can be used as freely programmable outputs, come along as well.

The board can be plugged directly on the front of the main board of the panel on the easy to remove chassis. No additional cabling needs to be done.

Only works with ZP2-F2-99

ZP2-LB

ZP2-FR-99 ZP2 Repeater Panel, Large Enclosure



ZP2-FR-99 ZP2 Repeater Panel, Large Enclosure

The fire panel repeaters supplied in local language come with a 2010-2-NB network board already fitted. Except for having no addressable loops and corresponding programmable outputs, the setup is similar as a normal fire panel. It has its own power supply, 2 conventional relay outputs and 2 supervised outputs, working in pair and dedicated to common fire and fault conditions, as well as 2 user configurable inputs for monitoring and control are available.

ZP2-FR-99

ZP2 2 Loop Addressable Fire Control Panel, Large Enclosure



ZP2 2 Loop Addressable Fire Control Panel, Large Enclosure

Ziton analogue addressable fire panel with 2 loop, expandable to 4 loops, that supports up to 127 addressees in 128 zones. This new modern styled panel is optimised for easy installation and use. Comes standard with 4 supervised sounder/fire-routing outputs, which can be used as freely programmable outputs as well. In addition 2 conventional relay outputs and 2 supervised outputs, working in pair and dedicated to common fire and fault conditions. 2 user configurable inputs for monitoring and control are also available.

ZP2-F2-99

ZP2 1 Loop Addressable Fire Control Panel, Small Enclosure



ZP2 1 Loop Addressable Fire Control Panel, Small Enclosure

Ziton analogue addressable fire panel with 1 loop that supports up to 127 addressees in 64 zones. This new modern styled panel is optimised for easy installation and use. Comes standard with 2 supervised sounder/fire-routing outputs, which can be used as freely programmable outputs as well. In addition 2 conventional relay outputs and 2 supervised outputs, working in pair and dedicated to common fire and fault conditions. 2 user configurable inputs for monitoring and control are also available.

ZP2-F1-S-99



ZP2 1 Loop Addressable Fire Control Panel, Large Enclosure



ZP2 1 Loop Addressable Fire Control Panel, Large Enclosure

Ziton analogue addressable fire panel with 1 loop that supports up to 127 addressees in 64 zones. This new modern styled panel is optimised for easy installation and use. Comes standard with 2 supervised sounder/fire-routing outputs, which can be used as freely programmable outputs as well. In addition 2 conventional relay outputs and 2 supervised outputs, working in pair and dedicated to common fire and fault conditions. 2 user configurable inputs for monitoring and control are also available.

ZP2-F1-99

ZP2 2 Loop Addressable Fire Control Panel, Small Enclosure



ZP2 2 Loop Addressable Fire Control Panel, Small Enclosure

Ziton analogue addressable fire panel with 2 loop that supports up to 127 addressees in 128 zones. This new modern styled panel is optimised for easy installation and use. Comes standard with 4 supervised sounder/fire-routing outputs, which can be used as freely programmable outputs as well. In addition 2 conventional relay outputs and 2 supervised outputs, working in pair and dedicated to common fire and fault conditions. 2 user configurable inputs for monitoring and control are also available.

ZP2-F2-S-99

A51E Ziton Addressable Line Relay Unit, Mains Switching



A51E Ziton Addressable Line Relay, Mains Switching

The A51E is an addressable relay providing double pole, volt free, change over contacts, rated to switch local mains supplies. The unit is intended for installation within the equipment to be switched, thereby offering savings in installation costs when compared to long, auxiliary circuit, wiring runs out from the control panel. Complying with EN54 Part 18, the relay can be located anywhere on the two core ZP loop and is designed for power up or shut down of the mains electrical supply to ancillary equipment. The unit is ideal for the control of associated system equipment such as mains fed magnetic door release circuits, extract fans and dampers.

A51E

ZP7 I/O Modules

A70E Ziton Conventional Interface



A70E Ziton Addressable Conventional Interface

The A70E-2 zone interface is fully loop powered and enables existing or new conventional zones to be interfaced to an analogue system, allowing all areas of a site to be controlled by the ZP analogue panel. Through its interface, each zone is assigned a unique address. Zones are monitored for fire and fault conditions and status is reported to the ZP control panel, every 2 seconds. Zones of up to 15 Ziton Z600 conventional trigger devices can be connected to the interface, with a maximum of 127 interface units installed on each ZP loop.

A70E

SMB-DIN2 Surface Box for A Series Modules



SMB-DIN2 Surface Box for A Series Modules

- Double box for 4 single or 2 double A Series modules
- IP66 rated housing
- DIN rail mounting inside

SMB-DIN2



A45E Ziton Addressable Interface



A45E Ziton Addressable Interface Module

Complying with EN54 Part 18 the A45E-2 can be installed singly, or used in groups to provide multiway inputs from equipment such as volt free, zonal outputs from conventional fire alarm systems or flow valves from sprinkler installations. Housed in a low profile, single width moulding the interface is designed to clip directly onto a standard DIN rail fixing or be installed in a SMB-DIN100 box (two unit capacity), or a SMB-DIN200 box (four unit capacity).

A45E

A60E A Series Ziton Addressable Mini Isolator Unit



A60E A Series Ziton Addressable Mini Isolator Unit

The A60E-2 line isolator provides short circuit protection, for analogue addressable loop wiring. Isolators are connected at intervals along the length of the loop, dividing the wiring into a series of separate monitored sections. A maximum of 16 isolator units can be connected to each loop, (to meet the requirements of EN54 Pt2) which together with isolators at the beginning and end (internal to the panel), enable a maximum of 17 monitored sections. In the event of a short circuit, isolators disconnect only the section of cable between the two isolators, located electrically closest to the fault. Devices outside the disconnected section continue to operate normally.

A60E

G2-SMB-DIN2 Surface Box for A Series Modules



SMB-DIN1 Surface Box for A Series Modules

- Single box for 2 single or 1 double A Series modules
- DIN rail mounting inside
- IP65 rated
- Polypropylene casing
- ¾ turn twist lock screw down cover
- Internal dimensions: 100x100x55mm

G2-SMB-DIN2

SMB-DIN1 Surface Box for A Series Modules



SMB-DIN1 Surface Box for A Series Modules

- Single box for 2 single or 1 double A Series modules
- IP66 rated housing
- DIN rail mounting inside

SMB-DIN1

A50E Addressable Line Relay



A50E Ziton Addressable Line Relay Module

The A50E-2 is an addressable relay providing single pole, volt free, change over contacts. The unit is intended for installation within the equipment to be switched, thereby offering savings in installation costs when compared to long, auxiliary circuit, wiring runs out from the control panel. Complying with EN54 Part 18, the relay can be located anywhere on the two core ZP loop and is designed for power up or shut down of building services, for example air conditioning plant, in fire conditions. The unit is ideal for the control of associated system equipment such as door release circuits, or the emergency shutdown of high risk services, for instance gas or oil supply valves in boiler rooms.

A50E



1 Gang Dry Lining Box

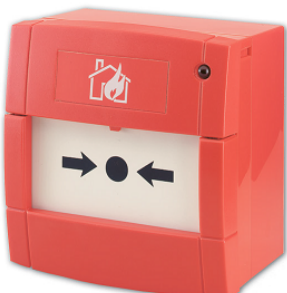


If you have a requirement for fitting MCP to dry walling these make excellent back boxes and result in the MCP being flush mount. The installation is easier (75 x 75) square hole and stronger as they anchor properly on the dry wall.

Dry lining box that is ideal for flush mounting in partition walls. The box accepts mains accessories with standard 1 gang fixing centres.

PL00189

Ziton ZP785 Addressable Call Point



ZP785-3 Addressable Manual Call Point, Red

172101

ZP7 MCP's

ZP787-3 Ziton Addressable Weatherproof Call Point



ZP787-3 Ziton Addressable Weatherproof Call Point, RED

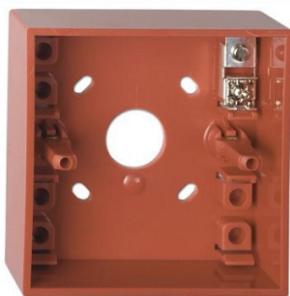
Rated at IP67 the ZP787 moulding is constructed of ABS plastic and intended for outdoor applications. A red LED indicator is prominently positioned on the front of the unit and illuminates when the device is operated.

Installed as part of the Ziton addressable loop, switch settings enable unique address to be assigned, which is polled every 2 seconds by the panel.

- EN54 part 11 compliant
- Resettable or frangible operating elements
- IP67 rated

ZP787-3

DMN787 Call Point Surface Mounting Back Box, RED



DMN787 Call point surface mounting back box, red

ABS 1 gang surface mounting box in red.

DMN787

DMN782 Hinged Cover



DMN782 Hinged Cover

Clear plastic protective cover fitted over the call point to help reduce false activation.

DMN782

DMN798 Breakable Seals for Hinged Cover (5 Pack)



DMN798 clear plastic breakable seals used to secure hinged protective covers over the call points. Come in Pack of 5

DMN798



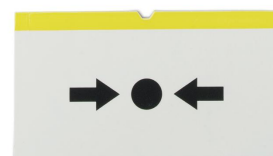
Ziton Call Point Reset Key



(PACK OF 10) The DMN784 is a manual call point test key allowing for the testing of manual call points without breaking of the glass. Keys are compatible with DMN700R, ZP785 and ZP787 call points.

DMN784

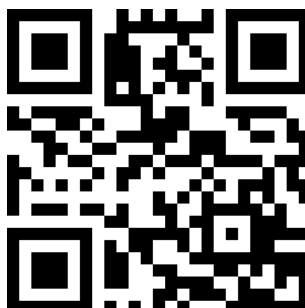
DMN800 Resettable Element



DMN800 Resettable Element for Call Point

Plastic element which can replace glass in the call point. This plastic element can be used on multiple occasions removing the need to replace glass after each activation. Sold individually.

DMN800



ZP7-SB1 Ziton Addressable Detector Base Black



Ziton ZP7-SB1 Black Detector Base
843101/BLK
Ziton ZP7-SB1 Base for addressable black
detectors.

84301/BLK

ZP730-2B Ziton Optical Smoke Detector Black



Ziton ZP730-2B Black Optical Smoke
Detector

The ZP730-2B is equivalent to the ZP730-2,
except for its black colour. Designed for early
response to slow burning, smouldering fires, the
ZP730-2 is an addressable smoke detector
developed to provide reliable sensing for most
fire alarm applications. The detector's proven
stability in air movement associated with air
conditioning systems has made it a popular
selection for modern building interiors.

Key Features:

- Respon

104BL



ZP7 Detectors

ZP7-IB-P Ziton Addressable Isolator Detector Base



This isolator base is for the use with Ziton
ZP7XX devices and comes complete with a built
in isolator.

A maximum of 16 of these can be used on a
single loop.

ZP7-IB-P

ZP730-2P Ziton Optical Smoke Detector



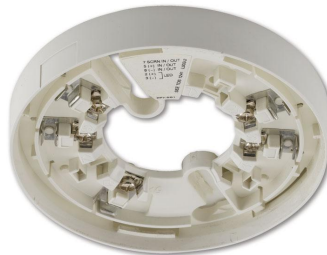
Ziton ZP730 Analogue Optical Smoke Sensor

Designed for early response to slow burning,
smouldering fires, the ZP730-2 is an analogue
smoke detector, developed to provide reliable
sensing for most fire alarm applications. The
sensors proven stability in air movement
associated with air conditioning systems has
made it a popular selection for modern building
interiors. Operating on light scatter principles, the
ZP730-2 fully meets the sensitivity requirements
of European Standard, EN 54 Pt 7 and is
approved by several international approval
bodies.

Key Features:

ZP730-2P

ZP7-SB1-P Ziton Addressable Detector Base



Ziton Analogue Addressable Sensor Base - Surface Mounting

ZP7-SB1 common mounting base for any ZP700
analogue sensor to be removed or replaced
without discontinuing loop wiring from sensor
terminals.

Sensors plug into the base unit with a simple
twist and lock action, allowing quick and easy
removal for cleaning or servicing.

ZP7-SB1-P

Ziton ZP732 Combination Smoke and Heat Sensor



Ziton ZP732 Analogue Combination Optical Smoke and Heat Sensor

Designed to provide the earliest response to a
wide range of fire types, the ZP732-2P sensor
combines optical smoke sensing and thermal
monitoring to provide an accurate warning of
fire. Individual software monitoring of each
element measures actual smoke levels, in
addition to temperature rates of rise.

Temperature response meets the requirements
of EN54 part 5 and the smoke sensitivity
complies with EN54 part 7.

Key Features:

ZP732-2P



Ziton ZP720 Analogue Thermal Sensor



Ziton ZP720 pAnalogue Thermal Detector

The ZP720-3P analogue thermal sensor is a
thermistor controlled device that responds to
changes in its ambient temperature. The device
provides a reliable response to fires in areas
where environmental conditions may prohibit
the use of smoke sensors. The sensitivity of
each sensor is set by the Ziton control panel
(ZP3 or ZP2) and can be adjusted between four
levels - from 58°C to 75°C - either manually or
automatically on a timed basis.

Key Features:

ZP720-3P

Ziton ZX832 Multisensing Fire Detector



Ziton ZX832 Analogue Addressable Multisensor
EN54 parts 5 and 7 certified Software adjustable
Multi-criteria detector

ZX832-3P

ZP755V-P Ziton Addressable Beacon



ZP755V-P Ziton Addressable Surface Mounting Beacon

Designed to complement audible alarms, the ZP755V beacon provides high intensity, visual signals for applications where alarm sounders alone would prove to be ineffective, or inappropriate for evacuating occupied premises. In systems where high levels of background noise prohibit the use of audible alarms, residential establishments with occupants who may be infirmed or hard of hearing or manufacturing areas where intense industrial noise demands the use of ear protection, the visual indication of alarms may become necessary.

Note needs standard ZP7-SB1-P base

ZP755V-P

ZP755B-2P Ziton Addressable Base Sounder



ZP755B-2P Ziton Addressable Base Sounder

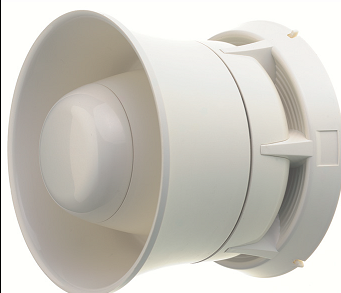
The ZP755B-2 combines sensor base and audible sounder in a single stylish moulding. It offers both audible and visual warnings from a single, addressable, loop wired unit. The unit provides an elegant solution for areas where the installation of a separate sensor and sounder would prove expensive, both in equipment capital value and system wiring costs. Independent addressing for the sensor and alarm facility is featured, with sound levels conforming to EN54 Part 3.

Polar White

ZP755B-2P

ZP7 Sounders

ZP755HA-2P Ziton Addressable Horn Sounder, Polar White



ZP755HA-2P Ziton Addressable Horn Sounder, Polar White

ZP755HA-2 is designed with dual front and rear sound paths, providing an 'all around' sound output - ideal for open area coverage. Installed directly onto and powered by the ZP wiring loop - ZP755HA-2 enables the system designer to offer a complete ZP analogue addressable system on a single pair of wires.

Continuous, intermittent and two-tone outputs are available, from which any combination can be chosen to provide alert and evacuate, two stage alarms.

Requires SPB-2P base

ZP755HA-2P

ZP755HAV-2P Ziton Addressable Omnidirectional Sounder Visual Indicator, White



ZP755HAV-2P Ziton Addressable Omnidirectional Sounder with Visual Indicator, Polar White

Disability legislation increasingly requires visual alarm signals to be employed to ensure equal response from people with hearing impairment. The ZP755HAV-2 is perfectly suited for this application and indeed any involving high levels of background noise. It provides both audible and visual warnings from a single, addressable, loop wired unit.

Continuous, intermittent and two-tone audible outputs are available, from which any combination can be chosen to provide alert and evacuate, two stage alarms. All sound types comply with BS 5839 Part 1 recommended frequencies. The ZP755HAV-2 produces a sound output of 102 dBA, measured at 1 metre.

Requires SPB-2P base

ZP755HAV-2P

ZP755BV-4P Ziton Addressable Base Sounder with Visual Indicator, Polar White



ZP755BV-4P Ziton Addressable Base Sounder with Visual Indicator, Polar White

The ZP755BV-3 combines a sensor base, audible sounder and high intensity beacon in a single stylish moulding. It offers both audible and visual warnings from a single, addressable, loop wired unit. Providing an elegant solution for areas where the installation of a separate sensor, sounder and beacon would prove expensive, both in equipment value and system wiring costs, the unit meets the requirements of most local disability legislation. Installation time is further reduced as the moulding plugs directly onto a first fix base, eliminating the need for any internal connections. The ZP755BV-3 is perfectly suited for any location involving high levels of background noise.

Requires SPB-2P

ZP755BV-4P

ZP755HAV-2R Ziton Addressable Omnidirectional Sounder Visual Indicator, Red



ZP755HAV-2R Ziton Addressable Omnidirectional Sounder with Visual Indicator, Red

Disability legislation increasingly requires visual alarm signals to be employed to ensure equal response from people with hearing impairment. The ZP755HAV-2 is perfectly suited for this application and indeed any involving high levels of background noise. It provides both audible and visual warnings from a single, addressable, loop wired unit.

178001



ZP755W-R Weatherproof Horn Sounder, Red



ZP755W-R Ziton Addressable Weatherproof Horn Sounder, Red

The ZP755W-R is an addressable, weatherproof sounder, designed for use on ZP analogue addressable fire detection and alarm systems. The sounder has been developed for outdoor applications, or for use in areas where the ingress of water can be expected, for example where hygiene requirements demand regular washing or hosing down of the protected area. Installed directly onto and powered by the ZP wiring loop, the ZP755 range enables the system designer to offer a complete ZP analogue addressable system on a single pair of wires. Installation costs are greatly reduced, whilst system integrity, sounder options and programmed alarm organisation are significantly increased.

178601

ZP755WV-R Weatherproof Horn Sounder with Visual Indicator, Red



ZP755WV-R Weatherproof Horn Sounder with Visual Indicator, Red

The ZP755WV-2R is an addressable, weatherproof sounder beacon, designed for use on ZP analogue addressable fire detection and alarm systems. The device has been developed for outdoor applications and is fully compatible with the range of ZP755 loop wired sounders. Installed directly onto and powered by the ZP wiring loop, the ZP755 range enables the system designer to offer a complete ZP analogue addressable system on a single pair of wires. Installation costs are greatly reduced, whilst system integrity, sounder options and programmed alarm organisation are significantly increased.

178701



ZP755R Ziton Addressable Room Sounder



ZP755R Ziton Addressable Room Sounder
 The ZP755R is an addressable, sounder, designed for use on ZP analogue addressable fire detection and alarm systems. Developed for applications in individual rooms, sleeping accommodation or small compartments where it is impractical or unnecessary for the sounder and sensor to be combined. Installed directly onto the ZP wiring loop.
 The ZP755R features a sound output of 90 dBA and a volume control for areas where a reduced sound output is required.
 Needs SPB-2R Base

177401

ZP755HA-2R Ziton Addressable Horn Sounder, Red



ZP755HAV-2R Ziton Addressable Horn Sounder, Red
 ZP755HA-2 is designed with dual front and rear sound paths, providing an 'all around' sound output - ideal for open area coverage. Installed directly onto and powered by the ZP wiring loop - ZP755HA-2 enables the system designer to offer a complete ZP3 analogue addressable system on a single pair of wires.
 Continuous, intermittent and two-tone outputs are available, from which any combination can be chosen to provide alert and evacuate, two stage alarms.
 The ZP755HA-2 produces a sound output of 102 dBA tested at 1 metre. The volume setting can be reduced for areas where a lower sound output is required. Moulded in high impact thermoplastic, the sounders are available in either red or white.

177601



ZP7 Devices

SPB-2P Pluggable Base for ZP755 Series Devices, Polar White



SPB-2P Pluggable base for Ziton ZP755 Devices, Polar White

The SPB-2 pluggable base provides a basis for terminating ZP755 alarm device loop wiring at first fix stage. Forming an integral part of the overall unit assembly, the bases are provided with slots for screw fixing, either directly to the building structure, or a wide range of international conduit boxes. Bases feature large wiring terminals with captive clamping washers to ensure secure termination.
 Bases are manufactured in moulded ABS and are available in either red or white.

SPB-2P

SPB-2R Pluggable Base for ZP755 Series Devices, Red



SPB-2R Pluggable base for Ziton ZP755 Devices, Red

The SPB-2 pluggable base provides a basis for terminating ZP755 alarm device loop wiring at first fix stage. Forming an integral part of the overall unit assembly, the bases are provided with slots for screw fixing, either directly to the building structure, or a wide range of international conduit boxes. Bases feature large wiring terminals with captive clamping washers to ensure secure termination.
 Bases are manufactured in moulded ABS and are available in either red or white.

SPB-2R

2010-2-NB Ziton ZP2 Network Card



ZP2 Network Card 2010-2-NB

The Firenet network board allows you to create a robust class A redundant 32 node network, via RS485, supporting maximum 32 loop. Each node can be a fire panel with or without user interface (black box) or a fire panel repeater. In case optical fiber is required to cover more than 1500m between nodes or in case of EMC issues we recommend a copper/fiber converter.

It is possible to repeat the user interface of the panel e.g. if there are more exit doors in the building and on each exit door the visibility of the fire system is required. In case you need to spread the load of the system, or if you have more buildings on one site that need to get connected together in one system or in case a specification requires e.g. that on each floor of the building a panel is installed that controls it's own floor a ring network can be created.

2010-2-NB

ZP2-ZI-20 Ziton ZP2 20 Zone LED Card



Ziton ZP2 20 Zone LED Card

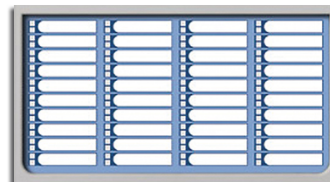
The 20 Zone LED card fits into the ZP2-F1-99 and ZP2-F2-99 panels.

Fits neatly below the LCD display providing 20 LEDs with space for text labels to identify each zone.

ZP2-ZI-20



ZP2-ZI-40 Ziton ZP2 40 Zone LED Card



Ziton ZP2 40 Zone LED Card

The 20 Zone LED card fits into the ZP2-F1-99 and ZP2-F2-99 panels.

Fits neatly below the LCD display providing 40 LEDs with space for text labels to identify each zone.

ZP2-ZI-40

ZP2-ZI-24 ZP2 24 Zone LED card



Ziton ZP2 24 Zone LED Card

The 20 Zone LED card fits into the ZP2-F1-S-99 and ZP2-F2-S-99 panels.

Fits neatly below the LCD display providing 24 LEDs with space for text labels to identify each zone.

ZP2-ZI-24