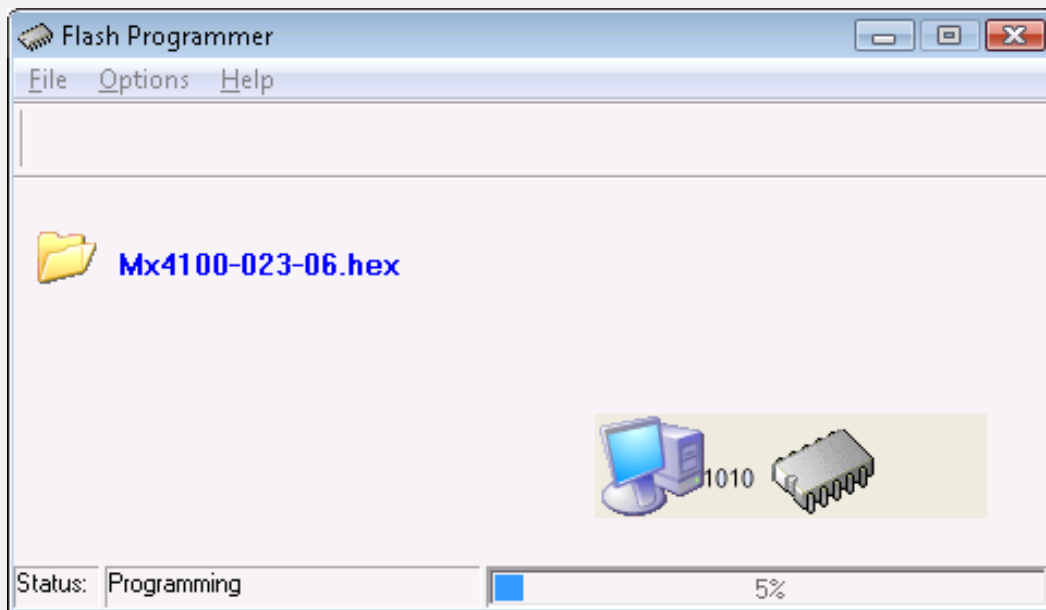


Flasher PC Application



The operation and functions described in this manual are available from Software Version V2.5 onwards.

Specifications & Ordering:

Models, Sales Order Parts:

PC-Net-014

Applications / Limitations:

Fire and lighting products are equipped with a facility that enables the on-board micro-controller to be programmed in the field by a suitably qualified engineer. The equipment required to program a product is as follows: -

1. Windows™ compatible PC.
2. "Advanced" RS232 Serial Lead. (3 to 9 pin) and/or USB A-B lead
3. "Flasher.exe" PC programming utility.
4. Target "hex" file

The product to be programmed must be set to programming mode – as per the instructions presented by the Flasher tool.

Note, for programming products via a USB connection, the relevant USB driver must be installed on the P.C.

Compatibility:

Windows™ XP, Windows™ Vista and Windows™ 7

Table of Contents

Page

1 OVERVIEW OF THE FLASHING PROCEDURE.....4

2 INSTALLATION.....4

2.1 FLASHER4

2.2 USB DRIVER4

3 LAUNCHING.....4

4 PROGRAMMING.....5

4.1 PREPARATION5

4.2 PROGRAMMING SEQUENCE5

4.3 RETURNING TO NORMAL OPERATION6

1 Overview of the Flashing Procedure

In relation to the re-programming of devices, programming steps should be carried out strictly in accordance with the following sequence:-

1. Disconnect system network connections (where applicable).
2. Connect the PC to the device using USB or RS232 port.
3. Run the "Flasher" Program following the on-screen instructions.
4. Once the device is running again, disconnect USB/RS232 lead.
5. Reconnect system network connections (where applicable).

2 Installation

2.1 Flasher

To install the software on to the PC run the 'Setup.exe' file on the CD and follow on screen instructions.

2.2 USB driver

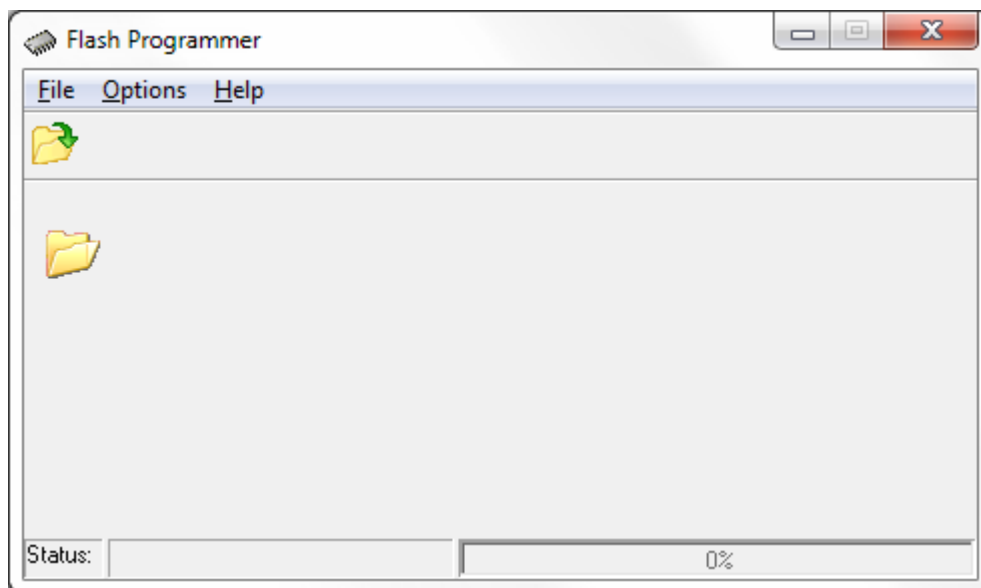
Where a USB connection is used to program a product, the supplied USB driver must first be installed.

Connect the product to the PC via a USB cable (with the product powered). The PC will detect the product as New Hardware and present a dialogue window.

Select the option to 'Install from a list or specific location'. Browse to the location of the supplied driver files (e.g. the "Advanced Drivers" folder), and follow the instructions to install the drivers.

3 Launching

Launch the Flasher Tool from the Start Menu.



4 Programming

4.1 Preparation

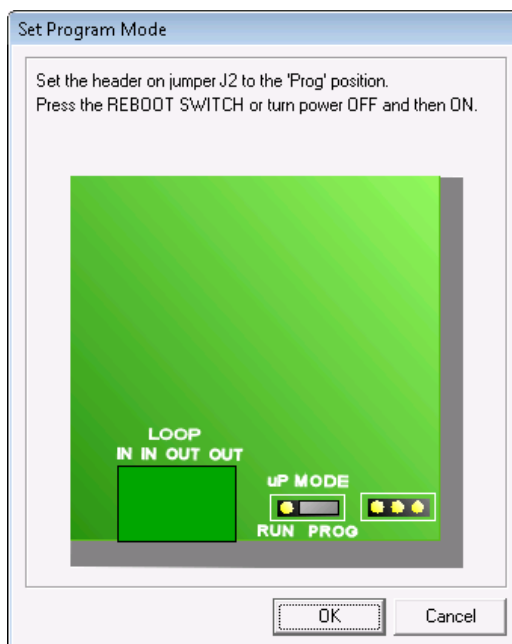
To prepare for the programming operation follow, in sequence, these steps:-

- Ensure that a record of the current product configuration is available.
- Where the product forms part of a larger networked system, disconnect the product from the network (remove the field wiring from the network ports).
- Connect the USB lead between the PC and the USB port of the unit to be programmed. Alternatively, where the product has no USB port, connect an RS-232 lead between the PC and the RS-232 port of the unit to be programmed.
- Launch the Flasher Tool from the Start Menu.
- Using "File->Open" from the menu bar or the "File Open" tool button, select the "target file" that is to be programmed into the unit. This file will have a ".hex" extension. (e.g. "Mx5000-051-01.hex")
- Where an RS-232 connection is used between the P.C. and product, the COM port of the PC must be selected. The default PC RS-232 COM port used is com1. If you wish to use a different port, select "Options□ComPort" from the menu bar and select the COM port to be used. The default baud rate for the communications port is 38400. For USB connection, these settings are not relevant.

4.2 Programming sequence

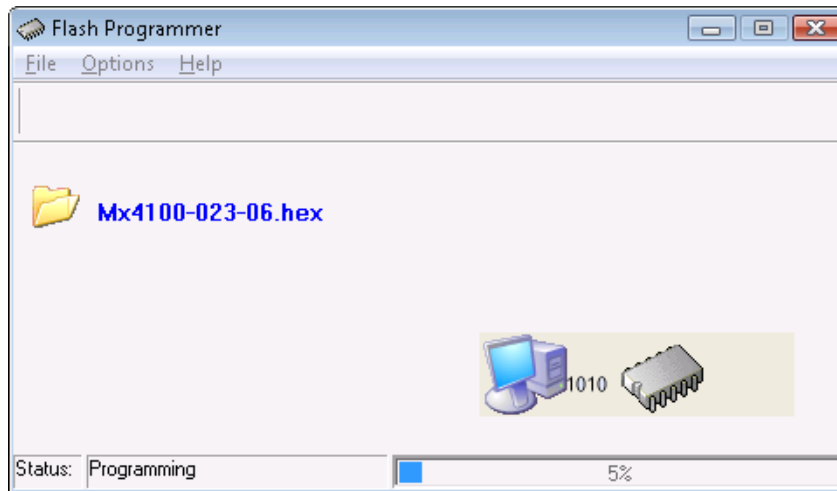
The exact procedure for selecting the programming mode varies between products – the correct procedure for each product is presented by the Flasher tool as part of the programming sequence. In all instances, the following sequence should be followed to program the product:-

- Ensure that the preparatory steps of disconnecting from the network and connecting the product to the PC etc. of section 4.1 have been completed.
- Now press the "Program" button (IC icon) or alternatively select "Action->Program". Instructions to set the unit into a state ready for FLASH programming are then given. A typical screen giving instructions is shown here:-



NOTE: Any reference to a "RESET" button or "RESET SWITCH" relates to the printed circuit board and not the "RESET" key on the front of the fire panel / repeater etc.

- Follow the instructions presented to put the product into programming mode.
- Press "OK" on the "Set Programming Mode" dialog box. The "Flasher" utility will now show the progress of the programming phase as shown below.

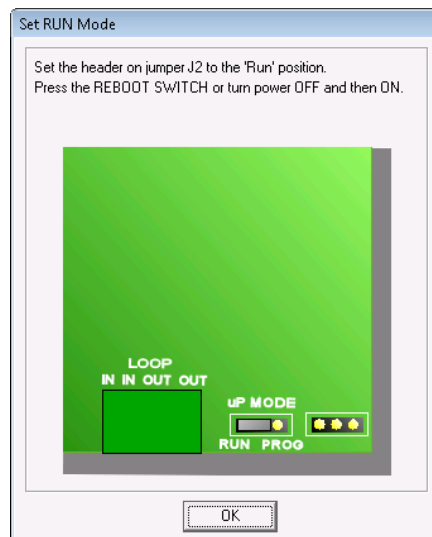


- e) Once the programming phase is complete, a dialog box will appear indicating programming completion. Click OK.

4.3 Returning to normal operation

Once successfully programmed, the following sequence of operations should be followed to return the product to normal operation:-

- a) The flasher tool will present instructions of how to return the product to normal operating mode. Follow these instructions prior to making changes to the connections, once completed click the OK button. An example of such an instruction is shown below:-



- a) Re-instate / modify the product configuration settings in the normal manner, as required.
- b) Verify that the product is running normally before removing any PC to product connections and re-connecting the the network (where previously dis-connected).

The programming sequence is now complete.

USER NOTES

Doc Number: 680-030

Revision: 05A



Advanced Electronics Ltd
Moorland Way, Cramlington, Northumberland, NE23 1WE UK

Tel: +44 (0)1670 707 111

Fax: +44 (0)1670 707 222

Email: sales@advancedco.com

Web: www.advancedco.com